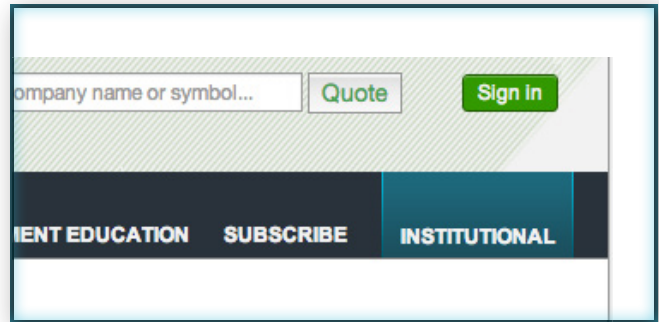


## SIGN IN

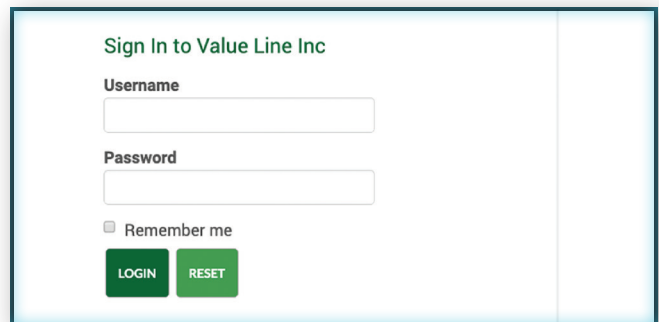
To access Value Line’s various products, go to **valueline.com** and click the **Sign In** button in the upper right corner, which will take you to the login page to enter your username and password

After signing in, you will arrive at the **Welcome Page** and find the following links:

- Browse Research
- Stock Selection Service: Select, Dividend Income & Growth, Special Situations
- Other Value Line products: Mutual Funds, Options, ETF
- FAQ (Frequently Asked Questions)
- Contact Us
- Links for the Dashboard, Stock Screeners, Watchlists, Alerts Hub and Portfolio Tool

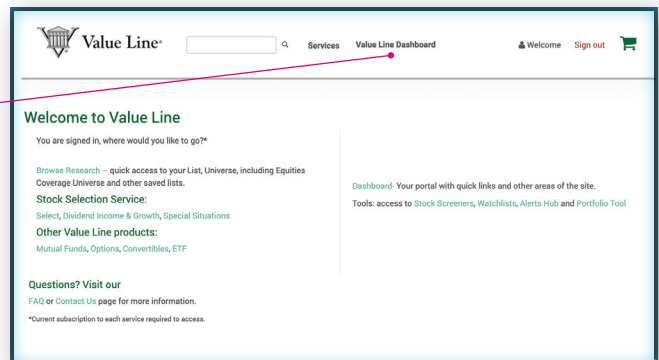


valueline.com



Login page

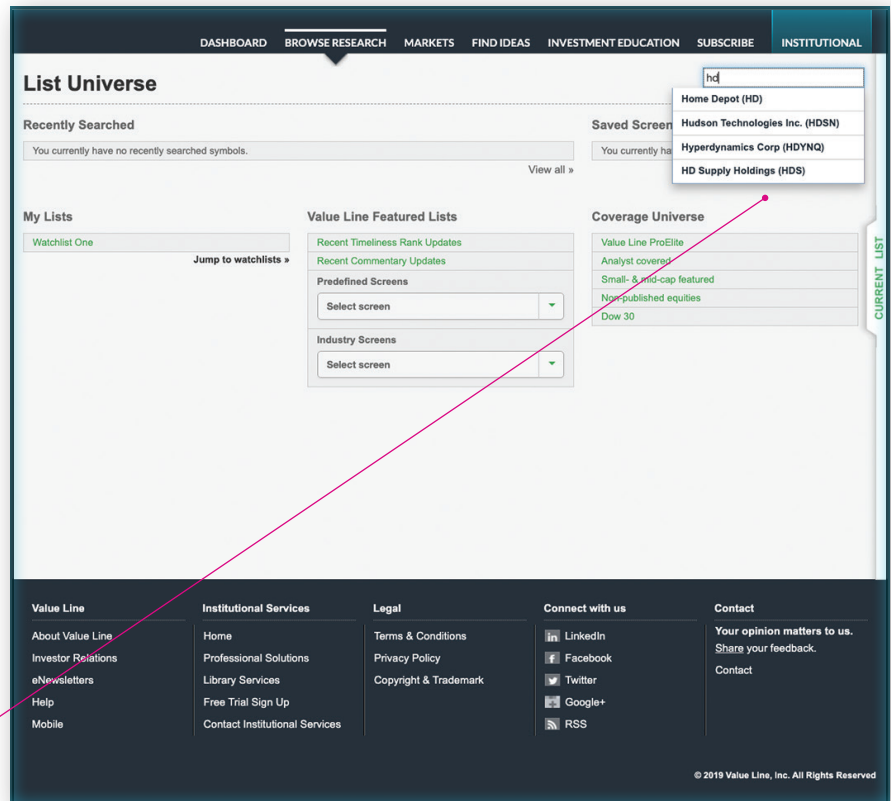
Clicking Value Line Dashboard in the main menu will take you to the Dashboard.



Welcome Page

## ACCESS A REPORT FROM BROWSE RESEARCH

Enter a company name or ticker symbol in the **Company name or symbol** field located on the upper right hand side of the page. Once the company appears, select the company or ticker symbol from the drop-down list and the report will open.



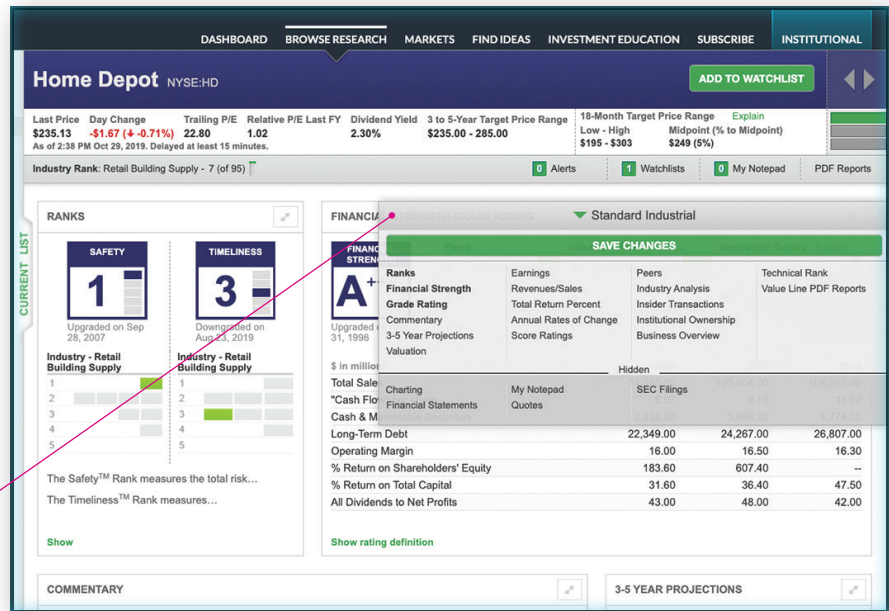
Begin typing a company name or ticker and then make your selection from the drop down list.

## CUSTOMIZE YOUR REPORT

To view the modules available to you, open the **slide-out menu**, located at the right edge of the Value Line report.

Click on the module you want to add to the report. For example, if you click on **Charting**, the Charting module will appear at the bottom of the Value Line Report page.

Hover over the slide-out menu on the right edge of the page to view.



### Value Line modules include:

- 3 – 5 Year Projections
- Annual Rates of Change
- Business Overview
- Capital Structure
- Charting
- Commentary
- Company News
- Current Position
- Dividends
- Earnings
- Financial Statements
- Financial Strength Grade Rating
- Industry Commentary
- Insider Transactions
- Institutional Ownership
- My Notepad
- Peers
- Quotes
- Ranks
- Revenues/Sales
- Score Ratings
- SEC Filings
- Technical Rank
- Total Return Percent
- Valuation
- Value Line PDF Reports

## HIDE MODULES

To hide a module already visible in the Value Line Report, place your cursor over the upper right corner of the module until **Hide** appears along with module sizing options. Click Hide to remove the module from the report.

Open the slide-out menu and select the module under **Hidden** to make it reappear. The module will be at the bottom of the report.

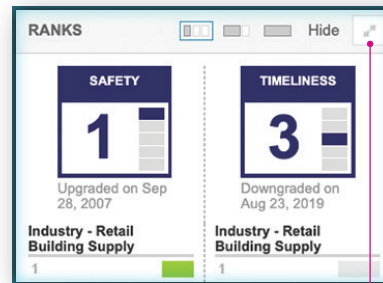
## DRAG AND DROP

To move a module within the Value Line Report, click and hold the right corner of the module with the arrows and drag the module to your desired position.

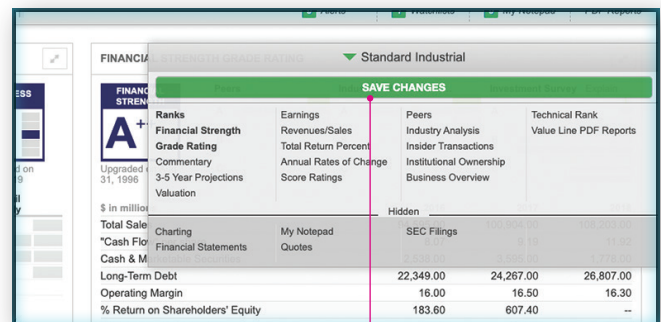
## SAVE A TEMPLATE

Once you've selected which module(s) to display, open the **slide-out menu**, located at the right edge of the Value Line report. Click the **Save Changes** button, then enter a name for your custom template.

To use a saved template, choose the report you wish to read and place your cursor over the slide-out menu and click **Standard Industrial** and select the desired template listed in **My Templates**.



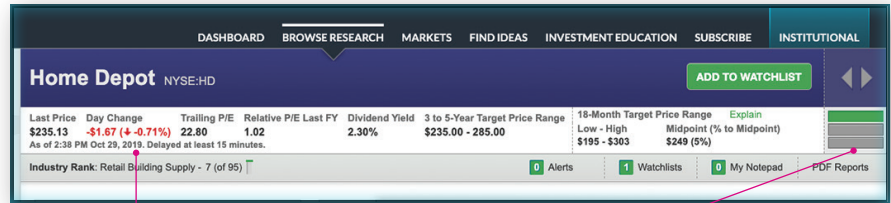
Hover the display icon on the module to show view options.



Use the Save Changes button to save your custom template.

## THE SECURITY BANNERS/ ALERTS BAR

On the upper right side of the Value Line Report you will see the **Information Summary** icon, consisting of two gray horizontal bars and one blue or green bar. Clicking on each bar will display different sets of information about the stock. For example, clicking the top bar displays the 52-week high and low prices, earnings per share estimates, and 3- to 5-year projections, etc. Clicking the bottom gray bar gives you the stock's alpha and beta. (Alpha is a measure of how much a stock price will rise relative to the market. Beta is a measure of the volatility of a stock compared to the market, 1 being the market. The S&P 500 Index is assigned a Beta of 1, so, a stock that has a beta of more than 1 is more volatile than the S&P 500 Index which is usually referred to as "the market"). This bar also shows the upcoming ex-date for stocks that pay dividends, etc.



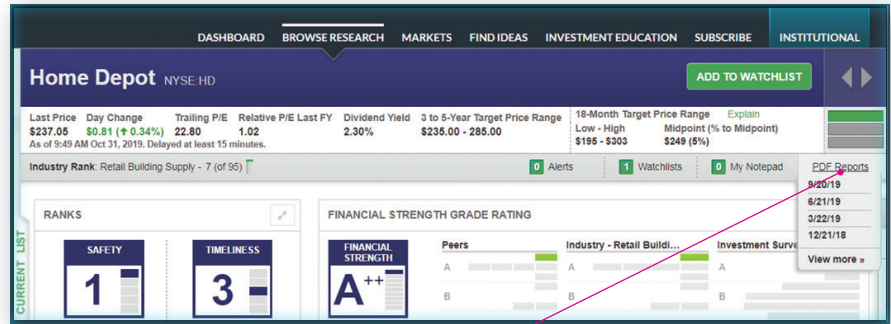
Use the Information Summary icon to scroll through the stock information displayed at the top of the Value Line Report page.

## ACCESS THE CLASSIC VALUE LINE PDF REPORT

Click **PDF Reports** Clicking this box will offer you a choice of the 4 most recent Value Line Classic single page company reports. You can also click **View More** to find a Classic single page company report by a specific date. Click on the date of the report you desire, and it will promptly open in a new window. You can then print, download, or read the report on the screen.

You can also access the PDF report in the **Value Line PDF Reports** module at the bottom of the Value Line Report.

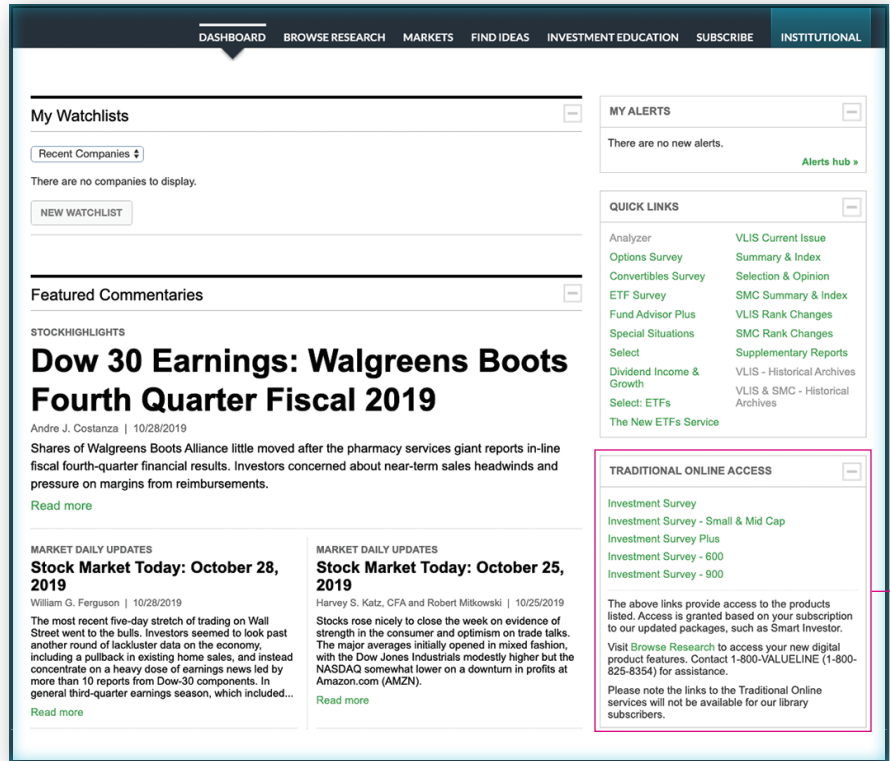
For more information on using the Classic Value Line report, see *How to Read a Value Line Report* in the **Tools Guides** section of **Investment Education**.



Clicking the PDF Reports button shows the most recent Report updates, which can be viewed and downloaded.

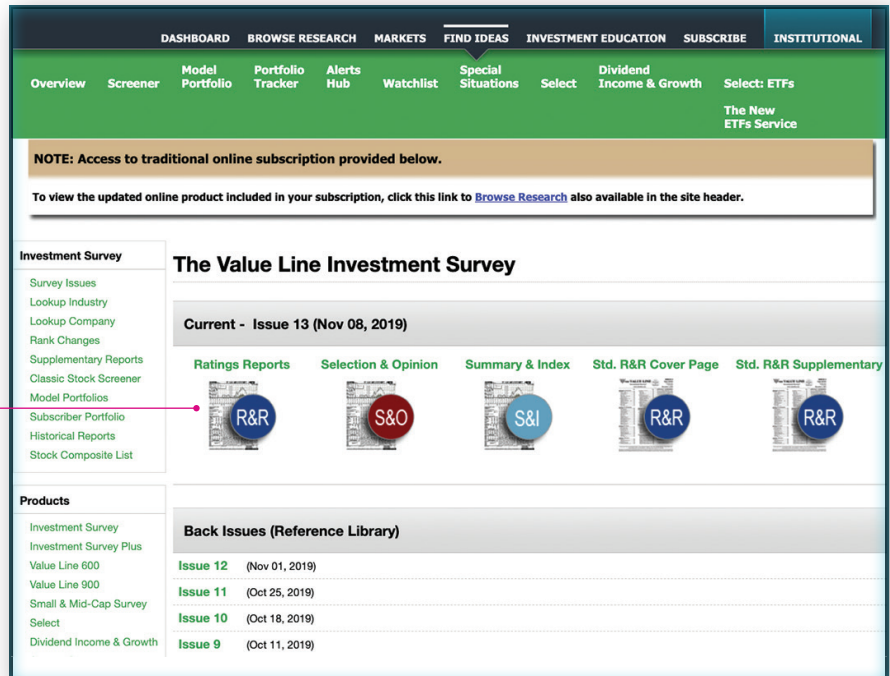
## ACCESS CLASSIC VERSIONS OF VALUE LINE SERVICES

The traditional versions of services such as *The Value Line Investment Survey*® and *The Value Line Investment Survey — Small & Mid-Cap* (and their constituent sections, such as *Selection & Opinion*) can be accessed via the **Traditional Online Access** module.



Traditional services access (based on your subscription) are available via the Traditional Online Access module.

The print publication section links are listed at the top of the page.



# VIEW CLASSIC VALUE LINE PDF REPORTS

Click **Lookup Company**, listed under **Investment Survey** box on the left side of the page. Choose the **Company**, **Industry** or **Ticker Symbol** search options, enter the relevant information in the field on the left and click the **Search** button — the results will be listed below.

**NOTE: Access to traditional online subscription provided below.**

To view the updated online product included in your subscription, click this link to [Browse Research](#) also available in the site header.

**The Value Line Investment Survey - Lookup Company Reports**

Enter the Ticker, Company or Industry Name:

HD  Company  Industry  Ticker Symbol

SEARCH

Search Results (1)

Company ↓	Ticker	Alert	PDF	HTML	Industry ↓	Time/Perf Rank	Report Date
Home Depot	HD				Retail Building Supply	3 (1)	Sep 20, 2019

©2019 Value Line, Inc. All Rights Reserved. This product is strictly for subscriber's own non-commercial, internal use. No part of it may be reproduced, stored or transmitted in any printed, electronic or other form, or used for generating or marketing any printed or electronic publication, service or product. Factual material is obtained from sources believed to be reliable and is provided without warranties of any kind. VALUE LINE IS NOT RESPONSIBLE FOR ANY ERRORS OR OMISSIONS HEREIN OR ANY DAMAGES OR LOSSES ARISING FROM ANY USE OF THE INFORMATION CONTAINED HEREIN. Officers, directors, or employees of Value Line, Inc. and its affiliates and subsidiaries, and EULV Asset Management, may own securities that are featured in this product. Nothing herein should be construed as an offer to buy or sell securities or to give individual investment advice. Value Line, the Value Line logo, The Value Line Investment Survey, The Most Trusted Name in Investment Research, "Smart research. Smarter investing.", Timeliness, and Safety are trademarks or registered trademarks of Value Line, Inc. and/or its affiliates in the United States and other countries. All other trademarks are the property of their respective owners. Value Line Arithmetic and Geometric Indices calculated by Thomson Reuters. Information supplied by Thomson Reuters. If we experience technical difficulty, online access is not guaranteed. The Timeliness rank on a particular stock may be suspended in the event of news developments.

Click the PDF icon to view the traditional one-page company report.